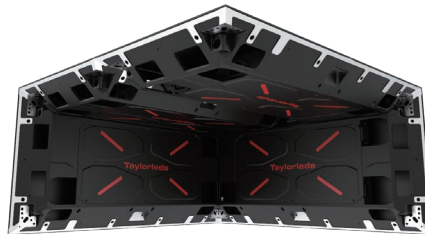
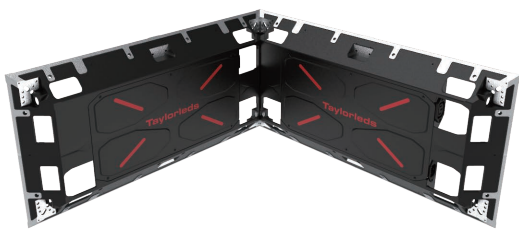


WAFER BREEZE SERIES



Fast, flat and flexible indoor fixed install solutions



| Cube Panel

| TFAS

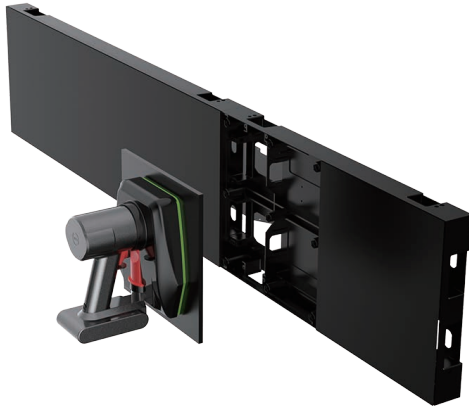
WB SERIES MODULAR INDOOR LED MADE BY

Taylorleds

Advanced Features

Front Maintenance

Utilizing a Taylorleds provided service tool allows for quick and easy module swapping. Also, all internal parts can be safely accessed and serviced from the front of the display.



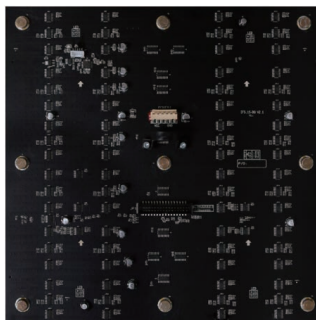
Rear Maintenance

The Wafer Breeze is 100% serviceable from the rear.



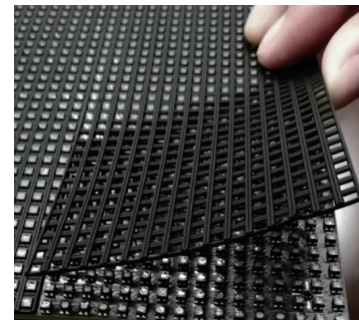
Smart module

With smart module, users can digitally access order info, color calibration, temperatures, working time and other parameters for better diagnostics and traceability.



Snap-on masks

Easy to remove and replace masks without struggling with messy glass or adhesives.

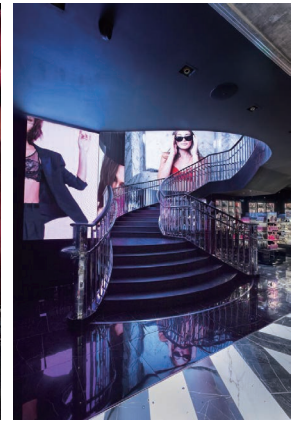
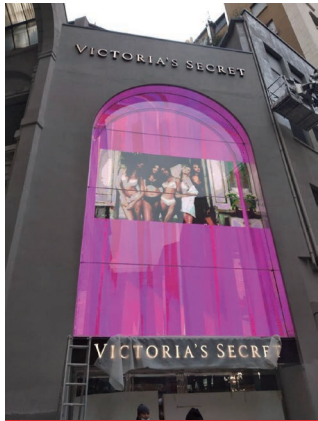


Create 0 to 15° concave curves with built-in fastening system

Projects References



The Luxor Hotel & Casino, Las Vegas, USA



Victoria's Flagship Store, Milan, Italy



TimeOut Market, Dubai

WB SERIES MODULAR INDOOR LED MADE BY

Taylorleds

Specifications

Parameters	WB1	WB2	WB3	WB4	WB5
LED Type	SMD 3in1 Black 1415	SMD 3in1 Black 1415	SMD 3in1 Black 2121	SMD 3in1 Black 2121	SMD 3in1 1921
Pixel Pitch (mm)	1.89	2.4	3.2/3.2HB	4/4HB	5.14/5.14HB
Panel Dimensions (W*H*D)(mm)	1152×288×54	1152×288×54	1152×288×54	1152×288×54	1152×288×54
Pixel Per Panel	608×152	480×120	360×90	288×72	224×56
Panel Weight (kg)	8.4	8.4	8.4	8.4	8.4
Panel Material	Die Casting Aluminum				
Module Dimensions (WxH)/(mm)	288×288	288×288	288×288	288×288	288×288
Brightness (nit)	800	800/2500	800/2500	800/2500	800/2500
Refresh Rate (Hz)	3600	3240	3840/1920	3840/1920	3840/≥1920
Gray scale (bit)	16	14	14	14	14
Contrast Ratio	5000:1	7000:1	6500:1	4500:1/8000:1	6500:1/10000:1
Color Temperature (K)	6500	6500	6500	6500	6500
Viewing Angle (H/V) (°)	140/120	140/120	160/140	150/120 160/140	150/130 160/140
AC Operating Voltage (V)	100~240	100~240	100~240	100~240	100~240
Power Consumption (Max./Avg.)(W/m²)	450/150	450/150	420/140 500/165	450/150 300/100	400/134 300/100
Storage Temperature (°C)	-40~+60	-40~+60	-40~+60	-40~+60	-40~+60
Operating Temperature (°C)	-10~+40	-10~+40	-10~+40	-10~+40	-10~+40
IP Rating (Front/Rear)	IP40/IP21	IP40/IP21	IP40/IP21	IP40/IP21	IP40/IP21
LED Lifetime (H)	100000	100000	100000	100000	100000
Module Maintenance	Front/Rear	Front/Rear	Front/Rear	Front/Rear	Front/Rear
PSU & Others Maintenance	Front/Rear	Front/Rear	Front/Rear	Front/Rear	Front/Rear
Panel Installation Type	Wall/Hanging/Stacking				
Max Rigging QTY.	/	/	/	/	/
Certificate	TUV-CE/ RoHS/ UL/ FCC				

WB SERIES MODULAR INDOOR LED MADE BY

Taylorleds